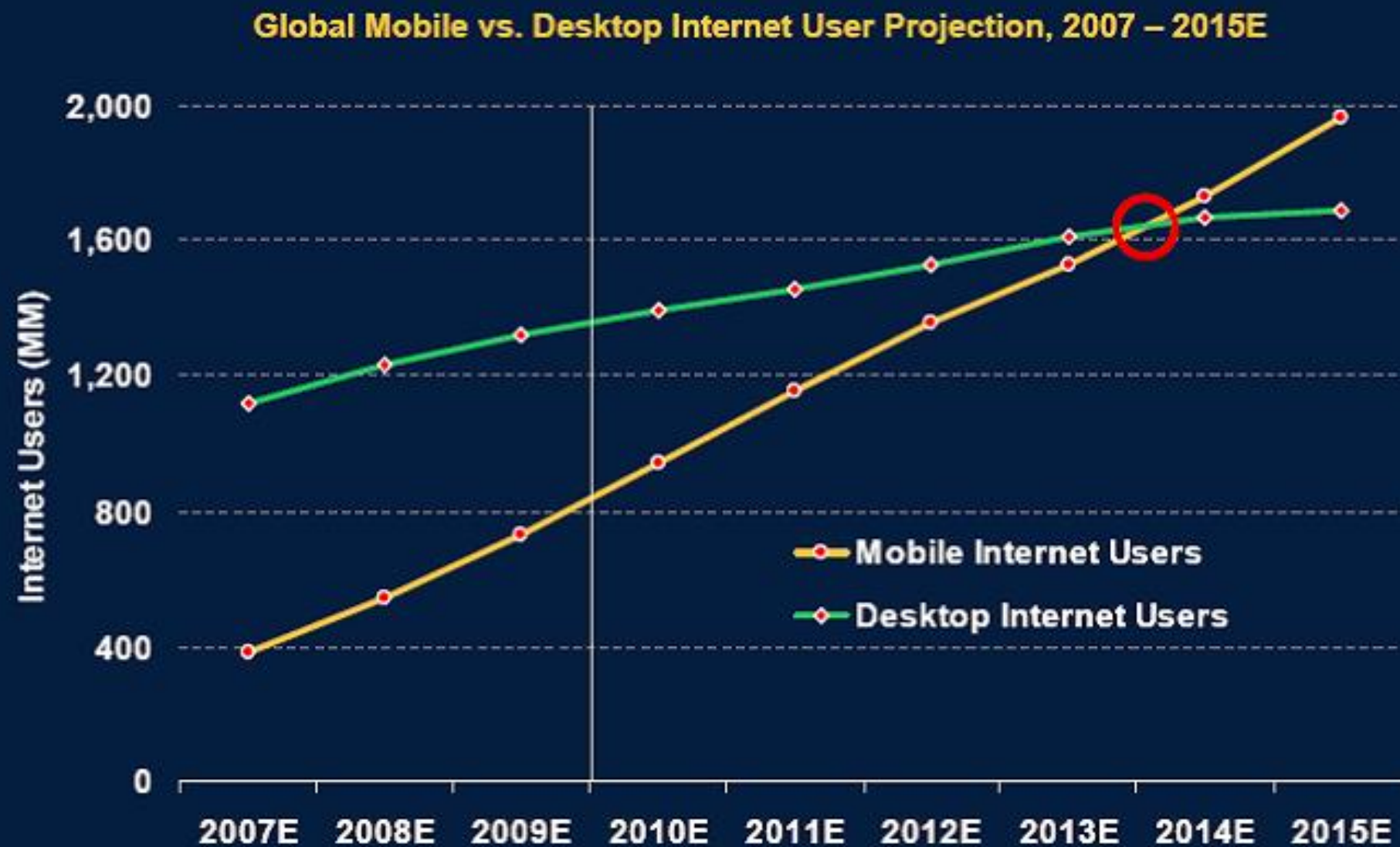


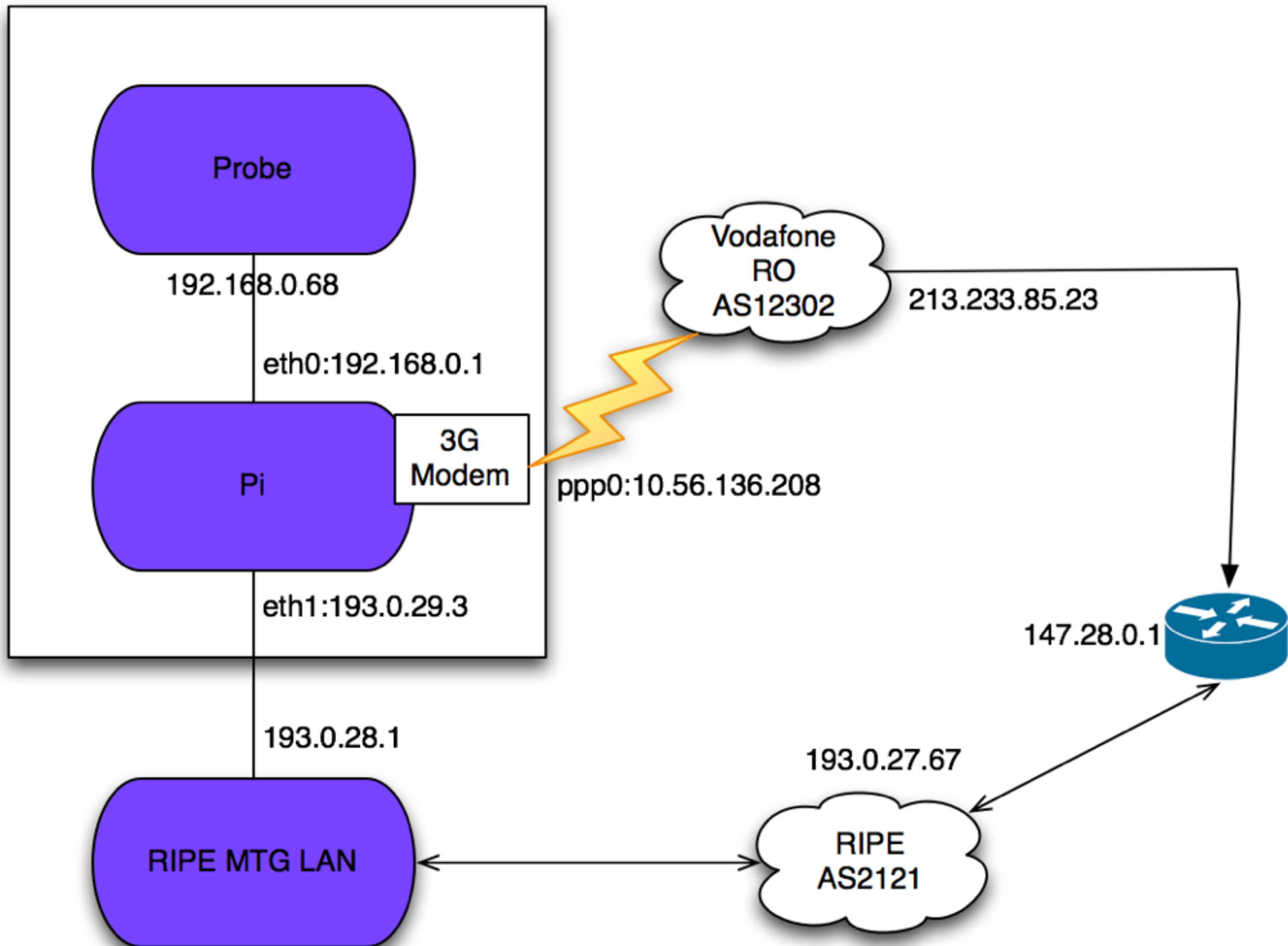
Multi-Homed Probe

Alexandru Manea, Vladislav Bidikov, Randy Bush,
Brendan Cleary

Why?

Mobile Users > Desktop Internet Users
Within 5 Years







RIPE Mobile Hack

- General
- Network
- Built-in Measurements
- User-defined Measurements

IPv4

Edit

Internet Address	213.233.85.23
ASN	12302 (VODAFONE_RO Vodafone Romania S.A.,RO)
Local Address	192.168.0.68
Gateway	192.168.0.1
Netmask	255.255.255.0
DNS Resolvers	192.168.0.1

IPv6

Edit

Current Configuration	
Automatic	Yes

The Hack

- IPTables rules to forward based on packet size
- Raspberry Pi wvdial config

Routing Policy

- TCP traceroute dst port==1025 >> LAN
- ICMP Packet size==48 >>LAN

```
pi@raspberrypi ~ $ sudo iptables -L -v -n -t mangle
Chain PREROUTING (policy ACCEPT 48564 packets, 6404K bytes)
pkts bytes target      prot opt in      out     source        destination
1104 52992 MARK        icmp -- *       *       192.168.0.0/24 0.0.0.0/0      icmp type 8 length 48 MARK set 0x2
1104 52992 RETURN     icmp -- *       *       192.168.0.0/24 0.0.0.0/0      icmp type 8 length 48
351 30888 MARK        tcp  -- *       *       192.168.0.0/24 0.0.0.0/0      tcp dpt:1025 MARK set 0x2
351 30888 RETURN     tcp  -- *       *       192.168.0.0/24 0.0.0.0/0      tcp dpt:1025
8053 751K MARK        all  -- *       *       192.168.0.0/24 0.0.0.0/0      MARK set 0x1
```

WVDial

```
pi@raspberrypi ~ $ more /etc/wvdial.conf
```

```
[Dialer Defaults]
```

```
Init1 = ATZ
```

```
Init2 = ATQ0 V1 E1 S0=0 &C1 &D2 +FCLASS=0
```

```
Init3 = AT+CGDCONT=1,"IP","live.vodafone.com"
```

```
Modem Type = USB Modem
```

```
ISDN = 0
```

```
New PPPD = yes
```

```
Phone = *99#
```

```
Modem = /dev/ttyACM0
```

```
Username = test
```

```
Password = test
```

```
Baud = 460800
```

```
[Dialer pin]
```

```
Init1 = AT+CPIN="1590"
```

```
pi@raspberrypi ~ $
```


Results

One Probe, two Paths

Traceroute Result for Probe #25760



2015-11-15 13:44 UTC

Traceroute to 147.28.0.1 (147.28.0.1), 48 byte packets

1	192.168.0.1	0.61ms	0.487ms	0.479ms	
2	193.0.24.1	AS2121	1.304ms	1.193ms	1.126ms
3	195.95.178.141	AS39107	1.905ms	1.665ms	1.635ms
4	195.60.76.93	AS3223	1.866ms	1.877ms	4.347ms
5	195.60.77.13	AS3223	3.886ms	3.659ms	4.108ms
6	93.186.132.52	AS6762	2.198ms	1.774ms	1.741ms
7	195.22.214.77	AS6762	28.329ms	28.298ms	28.686ms
8	195.22.214.63	AS6762	29.753ms	30.128ms	28.561ms
9	129.250.4.162	AS2914	32.581ms	30.596ms	30.48ms
10	129.250.2.4	AS2914	114.682ms	* *	
11	129.250.2.166	AS2914	133.998ms	132.728ms	131.685ms
12	129.250.3.42	AS2914	181.615ms	172.649ms	172.76ms
13	129.250.5.47	AS2914	180.307ms	179.527ms	180.056ms
14	147.28.0.1	AS3130	178.113ms	*	179.169ms

Traceroute Result for Probe #25760

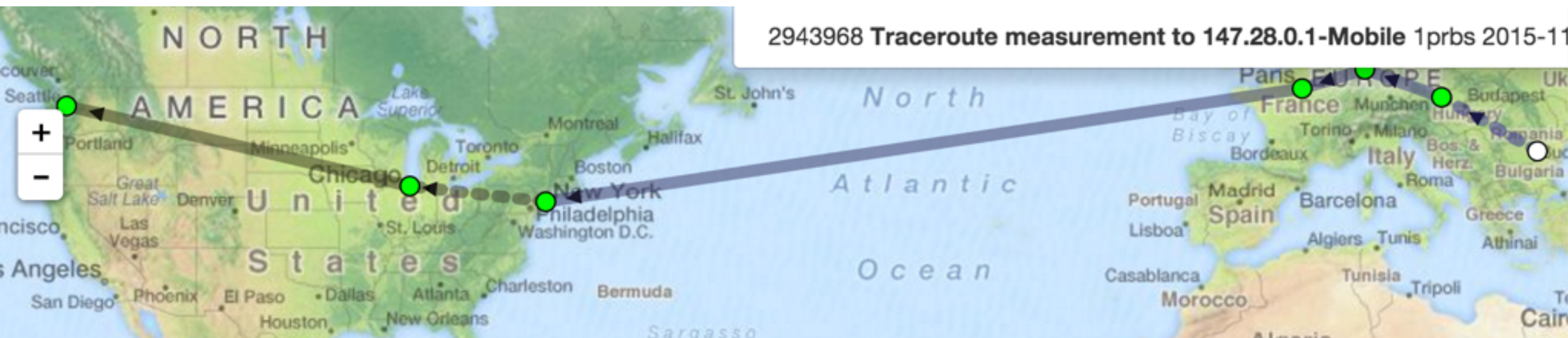
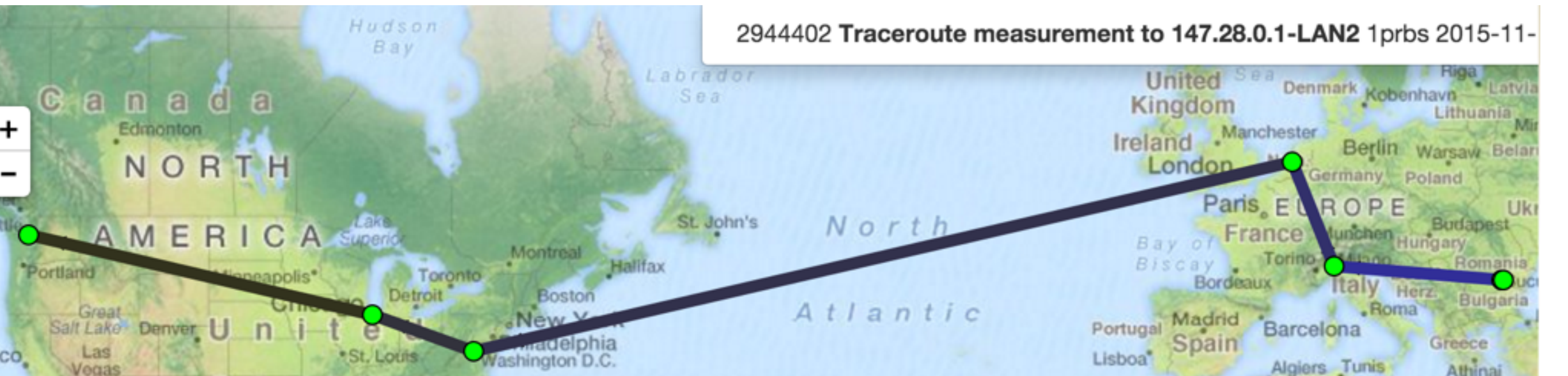


2015-11-15 13:53 UTC

Traceroute to 147.28.0.1 (147.28.0.1), 47 byte packets

1	* * *				
2	* * *				
3	10.241.147.213	242.892ms	319.835ms	349.856ms	
4	10.241.1.210	359.549ms	479.68ms	369.832ms	
5	192.168.159.225	369.618ms	270.222ms	469.701ms	
6	192.168.196.201	419.449ms	399.606ms	670.669ms	
7	192.168.196.194	339.306ms	359.232ms	259.723ms	
8	195.2.28.89	AS1273	250.3ms	439.58ms	429.386ms
9	195.2.28.62	AS1273	519.665ms	489.825ms	449.643ms
10	195.2.28.77	AS1273	389.606ms	469.721ms	439.629ms
11	195.2.31.234	AS1273	299.584ms	309.669ms	300.407ms
12	195.2.27.249	AS1273	349.184ms	701.325ms	430.088ms
13	144.232.228.185	AS1239	479.306ms	349.596ms	430.188ms
14	144.232.5.216	AS1239	429.777ms	399.278ms	380.088ms
15	144.232.18.59	AS1239	459.691ms	429.393ms	580.113ms
16	144.232.19.98	AS1239	429.661ms	479.353ms	510.492ms
17	144.232.8.60	AS1239	508.941ms	520.066ms	479.297ms
18	144.232.9.62	AS1239	419.652ms	560.035ms	479.426ms
19	147.28.0.1	AS3130	499.594ms	509.892ms	489.566ms

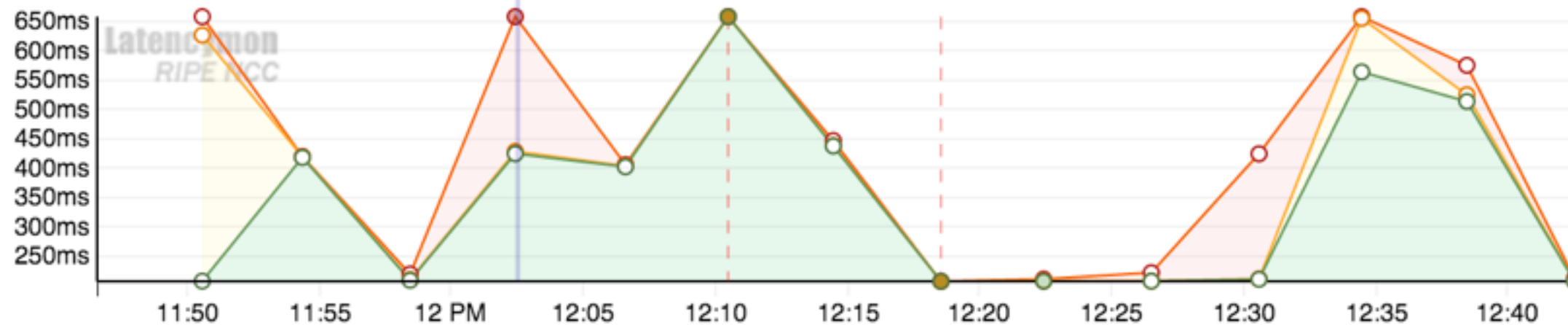
Fancy Maps



Ping Measurements

RIPE Atlas ping measurement #2942949 to 147.28.0.1

From 2015-11-15 13:46 to 2015-11-15



Probe 25760 (RO)

IP v4: 213.233.85.23

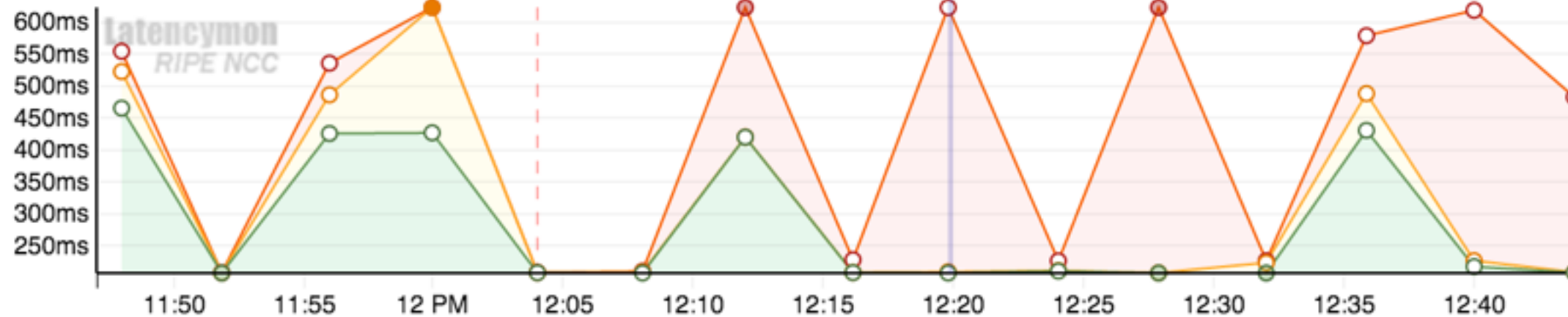
AS: 12302

Prefix v4: 213.233.85.0/24

Target: 147.28.0.1

RIPE Atlas ping measurement #2942512 to 147.28.0.1

From 2015-11-15 13:47 to 2015-11-15



Probe 25760 (RO)

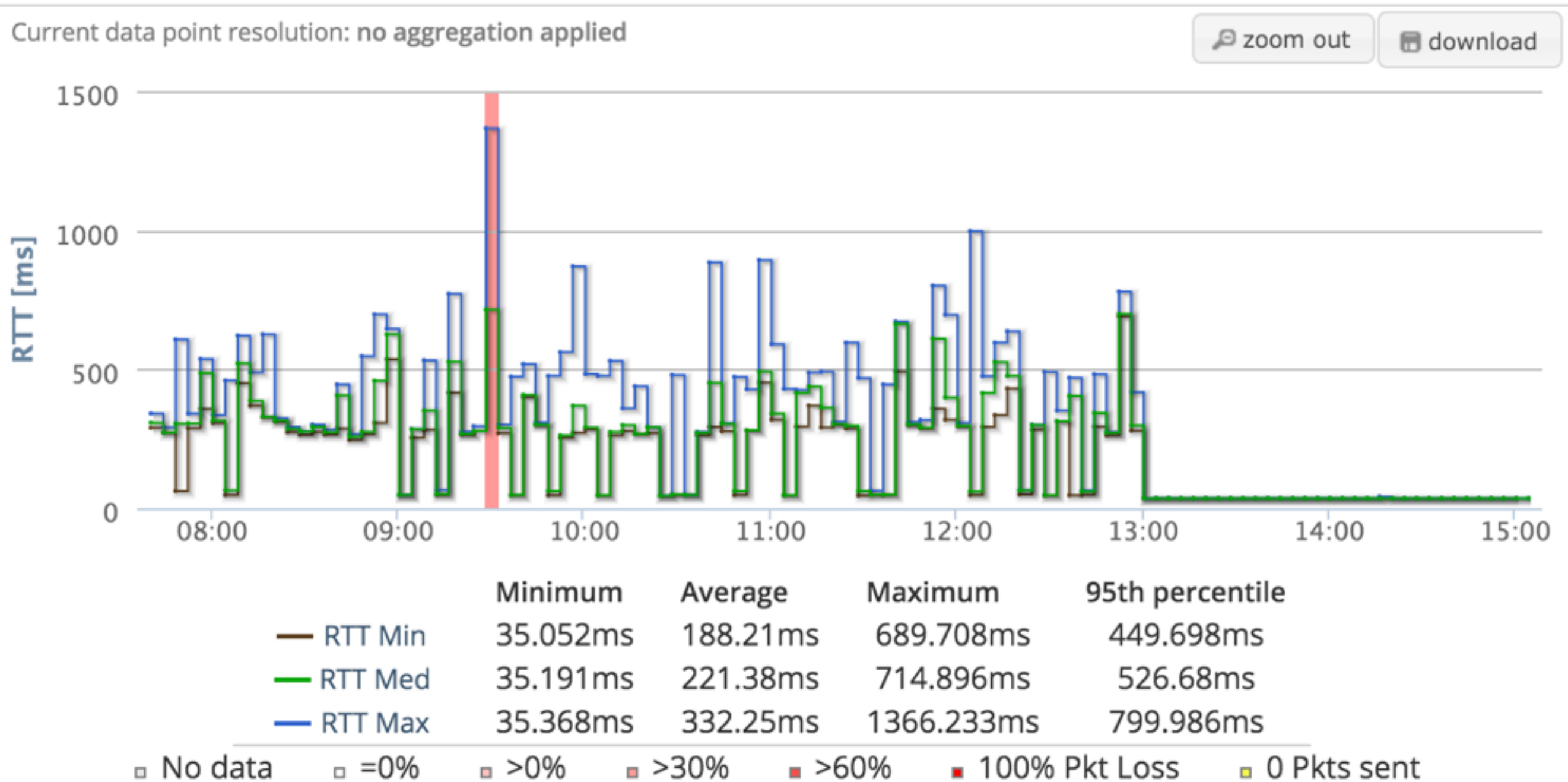
IP v4: 213.233.85.23

AS: 12302

Prefix v4: 213.233.85.0/24

Target: 147.28.0.1

Better Graph



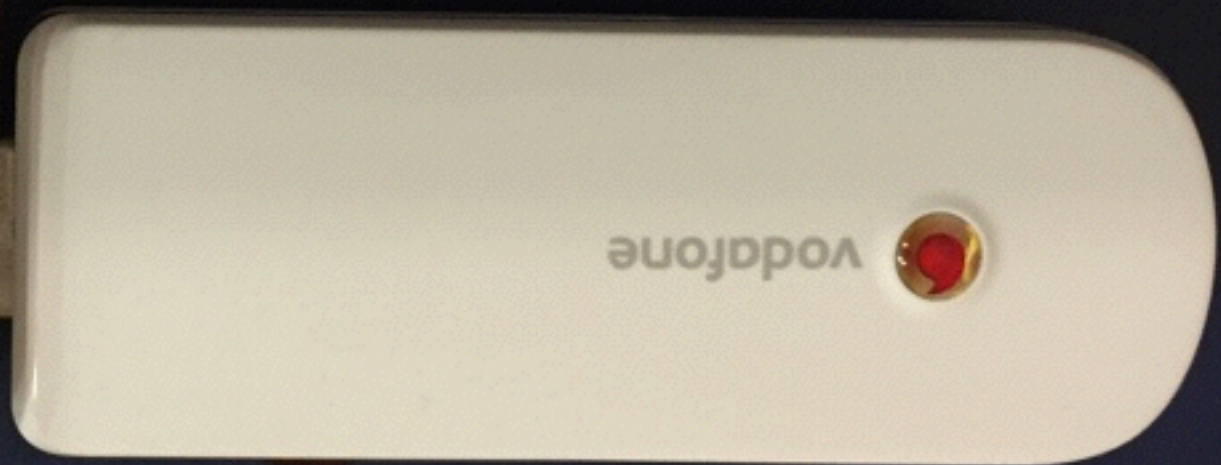
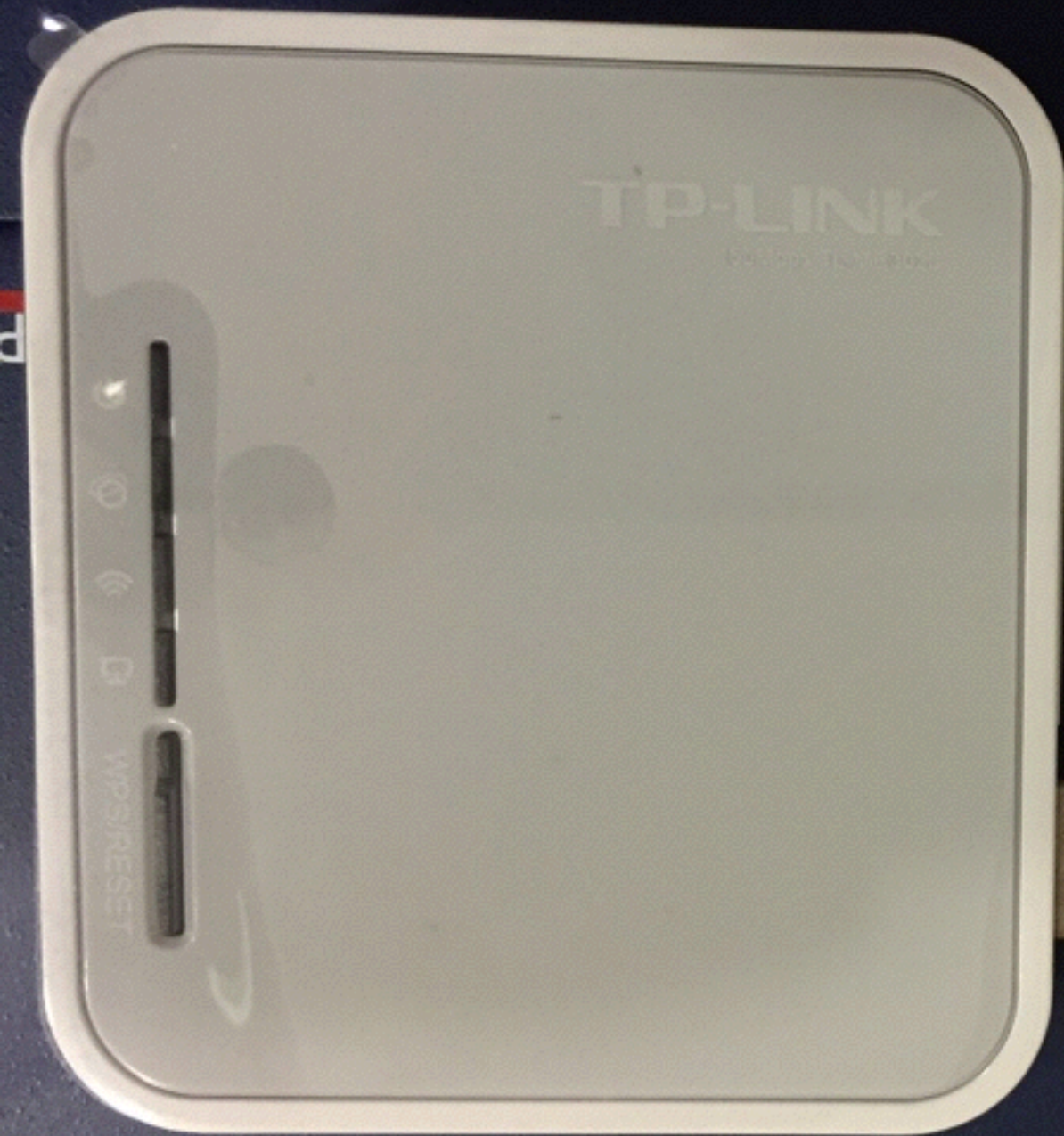
What went wrong

- Pi USB power limitations
- iptables

Future Considerations

- Communication to choose network
- Software SIM: Multiple Operators
- Data Plans \$\$\$
- SMS and Voice Measurements

Ripe Atlas Probe v3G ??



RIPE SIM Server hosted@Vesna's House

